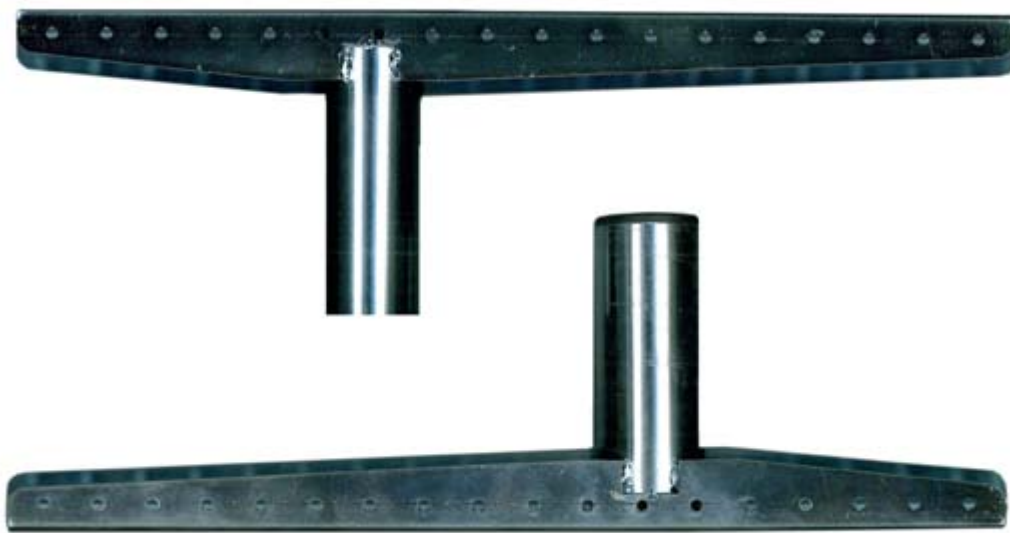




automatic length measuring by **TigerStop[®]**

Mounting Bracket Set

SawGear can be easily mounted to your saw stand using a SawGear Mounting Bracket set.
The components shown below are included in one set.



Saw Stand T-Support
T-Support unplugged (upper support) x 2
T-Support plugged (lower support) x 2



Tube Yoke
x 2



M-Grip
x 4



50cm Threaded Rod x 2



Self-tap
x 16



Nut
x 4



Set Screw
x 8



Rectangular
x 4



Nut
x 4



Bolt
x 4

Install the Brackets

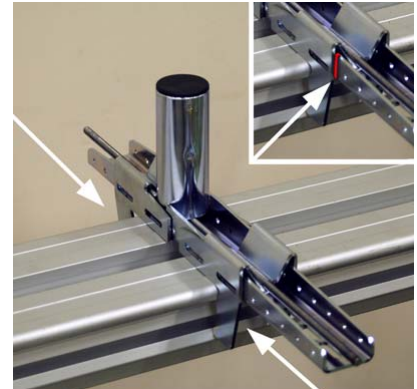
Install the SawGear mounting brackets onto your saw support following the steps illustrated below.



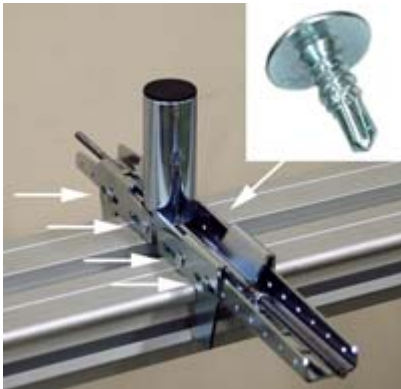
1. Place one plugged T-support on the saw stand.



2. Slide one threaded rod into the base of the T-support.



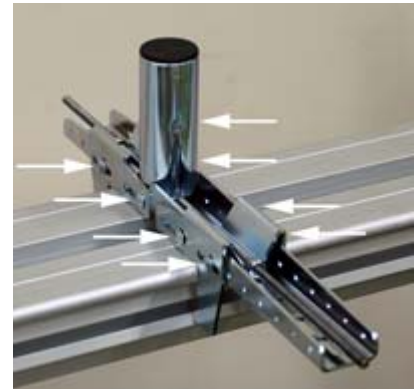
3. Slide 2 M-grips on the T-support, so the threaded rod passes over them, push them snugly against the saw stand, and mark their position.



4. Place the T-support with the M-grips in position onto a work surface and drive 4 self-tap screws into the slotted holes of the M-Grips and into the round holes of the T-support on both sides. Tighten all 8 screws, then back them off half a turn. Return the assembly to the saw stand.



5. Thread a rectangular washer and nut onto each end of the 50cm threaded rod and tighten them securely against the M-Grip on both sides.



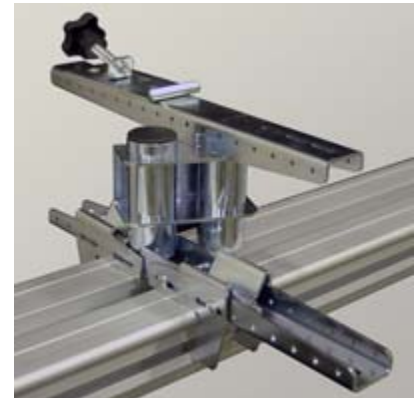
6. Retighten the 8 self-tap screws to firmly lock the T-support in place on the saw stand.



7. Turn 4 set screws into the holes in one tube yoke and slide the tube yoke onto the tube of the T-support. Rotate the yoke to approximate position and tighten down the set screws against the tube.



8. Insert one unplugged T-support inverted into the yoke as shown, and tighten the set screws to hold it in place.



9. Mount one SawGear bench mount bracket with knob (supplied with SawGear, not part of the mounting bracket set) to the top of the T-support using two bolts and nuts.

Repeat steps 1 to 9 to install the second SawGear mounting bracket at the opposite end of the saw stand. Any support legs you may be using come with integrated bracket.

SawGear Bench Mount Brackets

*SawGear comes with two (2) bench mount brackets. To order additional, use order# **BR-BM**.*

Secure SawGear in the clamps

1. Make sure both bracket mounts are approximately in line.
2. Lay SawGear across both bracket mounts in the desired position relative to the saw.
3. When SawGear is facing front, there is an angled channel running along the full length of the beam at the bottom. Pivot SawGear, so the curled front edge of both SawGear bench mount brackets fits into this channel.
4. Let SawGear lie flat against the surface of both clamps, so the beveled back lip of the SawGear beam can be secured by the locking knobs.
5. Turn the locking knobs to capture SawGear in both bench mount brackets.

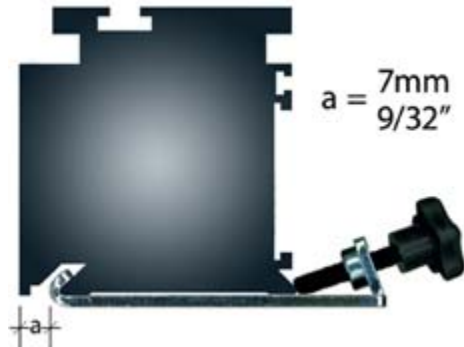


Fig. A - Section View

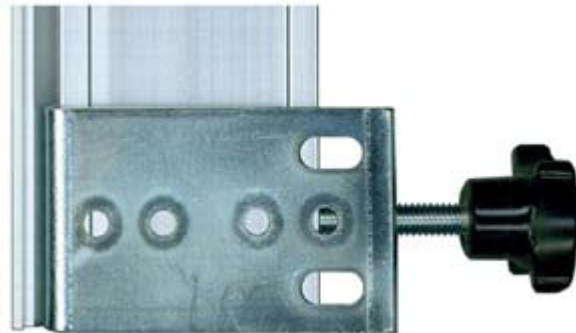


Fig. B - Plan View

Get SawGear into exact position

With SawGear secured by the two brackets, final positioning, leveling and adjusting is done by loosening the set screws in the tube yokes of the bracket mounts and raising or lowering, and rotating the components until the exact position is achieved, then tightening down all fasteners.

Using a Support Leg **SG-SL**

SawGear's longer lengths may require the use of an extra support leg.

- The support leg (Fig. C) is fully adjustable for height and can be placed wherever necessary.
- The support leg ends in an integrated bench support bracket.
- SawGear is attached to the support leg using the same clamping technique as described above.

Dismounting SawGear from the saw stand

SawGear is easily dismounted from the saw stand and any support legs by loosening the locking knobs and pivoting it off the brackets.

Always be sure to firmly tighten the locking knobs and all fasteners before using SawGear.



Fig. C